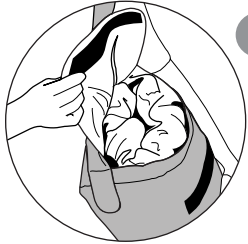


## Messenger Bag Instructions



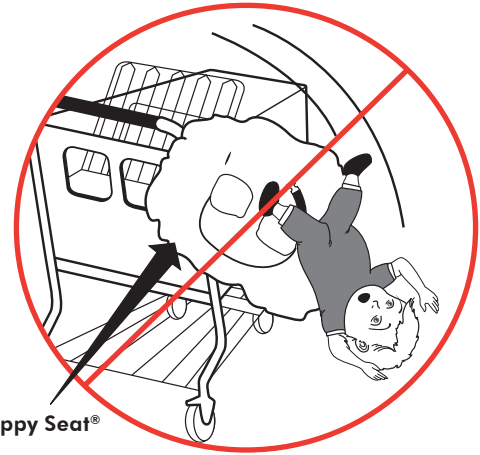
- 1** Release elastic perimeter  
While facing handles of shopping cart, release elastic perimeter of Floppy Seat® from sides of cart. Pull safety belt from back grid of shopping cart and bring over top of Floppy Seat®. Clip belt together.



- 2** Place Floppy Seat® inside bag  
Roll or fold Floppy Seat® into messenger bag until flap can fold over top of bag.



- 3** Attach Velcro® and carry!



Floppy Seat®

  
**Warning**

- Floppy Seat® safety belt must be secured to shopping cart or highchair by looping Floppy Seat® safety belt through back grid of shopping cart seat or frame of highchair, then through buttonhole in Floppy Seat® and buckling securely around child. (see instructions) Failure to do so could result in a child falling out of the shopping cart seat or highchair. **Never use Floppy Seat® if the Floppy Seat® safety belt cannot secure child to shopping cart or highchair.**
- Remove all plastic taggers before placing child in product or giving the product to the child.



**WARNING:**  
Never Leave Child Unattended

# Instructions

1

## Place Seat on Cart

While standing in front of the shopping cart, lay Floppy Seat® over seating area of cart so that short portion of seat belt faces you and is above leg holes (see figure 1). Stretch elastic perimeter of Floppy Seat® to cover all sides of shopping cart seating area and handle of cart. Assure that leg holes of cart are aligned with leg holes of Floppy Seat®. (If installed correctly, short portion of Floppy Seat® safety belt (see belt detail) will be facing you and above leg holes.)

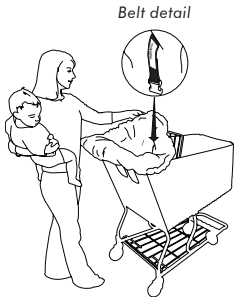


Figure 1 ▲

2

## Secure Seat to Cart

Secure Floppy Seat® safety belt to shopping cart seat by feeding long portion of belt from point "A" through back grid of shopping cart seat. Loop around 8-10 inches of back grid and feed back through grid and buttonhole "B". Pull on both ends of belt to be sure Floppy Seat® safety belt is secured to cart.

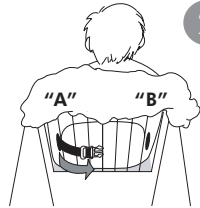


Figure 2 ▲  
Back views of shopping cart and highchair

## For Highchair

Secure Floppy Seat® safety belt to highchair by feeding long portion of Floppy Seat® safety belt around back part of frame of highchair, and through buttonhole "B." Pull on both ends of Floppy Seat® safety belt to be sure the seat cover is secured to the highchair.

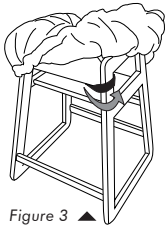
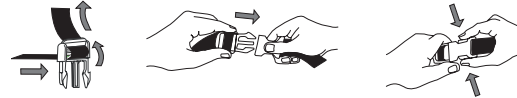
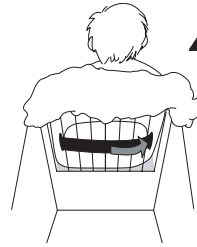


Figure 3 ▲



## WARNING!

Floppy Seat® safety belt must be secured to shopping cart or highchair by looping Floppy Seat® safety belt through back grid of shopping cart seat or frame of highchair, then through buttonhole in Floppy Seat® and buckling securely around child. (see figure 2 & 3) Failure to do so could result in a child falling out of the shopping cart seat or highchair. **Never use Floppy Seat® if the Floppy Seat® safety belt cannot secure child to shopping cart or highchair.**



## Use of Buckle

Make sure buckle is properly threaded by holding buckle and pulling on belt. The belt should not slip through buckle.

3

## Buckle Baby In

Place child in the secured Floppy Seat® described in Step 2. Clip buckle, in accordance with "Use of Buckle" instructions, so Floppy Seat® safety belt is around child. Adjust Floppy Seat® safety belt to fit snugly around child's waist. Pull on Floppy Seat® safety belt to be sure child and Floppy Seat® are secured to the shopping cart seat or highchair.

