

## EZCarry™ Instructions



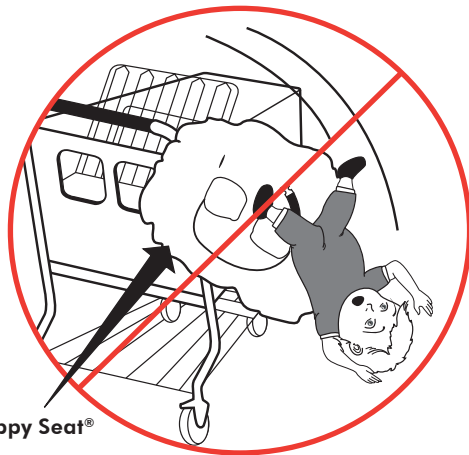
- 1** Release elastic perimeter  
While facing handles of shopping cart, re-release elastic perimeter of Floppy Seat® from sides of cart. Pull safety belt from back grid of shopping cart and bring over top of Floppy Seat®. Clip belt together.



- 2** Turn Bag Inside Out  
While facing front of Floppy Seat®, insert your hand inside the bag between handles and grasp fabric at the bottom of the bag between leg holes. Holding fabric tightly between the handles, pull material through hole towards you, turning the bag inside out. Roll the remaining fabric into the bag.



- 3** Use handles to carry!



Floppy Seat®



### Warning

- Floppy Seat® safety belt must be secured to shopping cart or highchair by looping Floppy Seat® safety belt through back grid of shopping cart seat or frame of highchair, then through buttonhole in Floppy Seat® and buckling securely around child. (see instructions) Failure to do so could result in a child falling out of the shopping cart seat or highchair. **Never use Floppy Seat® if the Floppy Seat® safety belt cannot secure child to shopping cart or highchair.**
- Remove all plastic taggers before placing child in product or giving the product to the child.



**WARNING:**  
Never Leave Child Unattended

# Instructions

1

## Place Seat on Cart

While standing in front of the shopping cart, lay Floppy Seat® over seating area of cart so that short portion of seat belt faces you and is above leg holes (see figure 1). Stretch elastic perimeter of Floppy Seat® to cover all sides of shopping cart seating area and handle of cart. Assure that leg holes of cart are aligned with leg holes of Floppy Seat®. (If installed correctly, short portion of Floppy Seat® safety belt (see belt detail) will be facing you and above leg holes.)

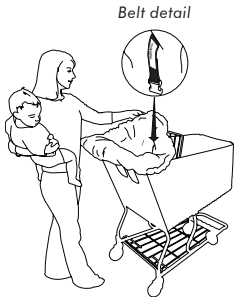


Figure 1 ▲

2

## Secure Seat to Cart

Secure Floppy Seat® safety belt to shopping cart seat by feeding long portion of belt from point "A" through back grid of shopping cart seat. Loop around 8-10 inches of back grid and feed back through grid and buttonhole "B". Pull on both ends of belt to be sure Floppy Seat® safety belt is secured to cart.

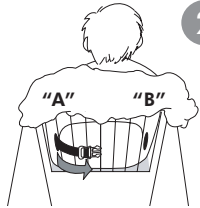


Figure 2 ▲  
Back views of shopping cart and highchair

## For Highchair

Secure Floppy Seat® safety belt to highchair by feeding long portion of Floppy Seat® safety belt around back part of frame of highchair, and through buttonhole "B." Pull on both ends of Floppy Seat® safety belt to be sure the seat cover is secured to the highchair.

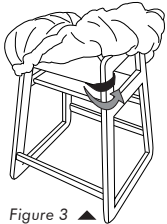
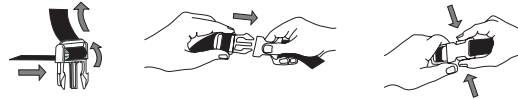
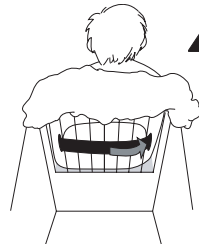


Figure 3 ▲



## WARNING!

Floppy Seat® safety belt must be secured to shopping cart or highchair by looping Floppy Seat® safety belt through back grid of shopping cart seat or frame of highchair, then through buttonhole in Floppy Seat® and buckling securely around child. (see figure 2 & 3) Failure to do so could result in a child falling out of the shopping cart seat or highchair. **Never use Floppy Seat® if the Floppy Seat® safety belt cannot secure child to shopping cart or highchair.**



## Use of Buckle

Make sure buckle is properly threaded by holding buckle and pulling on belt. The belt should not slip through buckle.

3

## Buckle Baby In

Place child in the secured Floppy Seat® described in Step 2. Clip buckle, in accordance with "Use of Buckle" instructions, so Floppy Seat® safety belt is around child. Adjust Floppy Seat® safety belt to fit snugly around child's waist. Pull on Floppy Seat® safety belt to be sure child and Floppy Seat® are secured to the shopping cart seat or highchair.

